

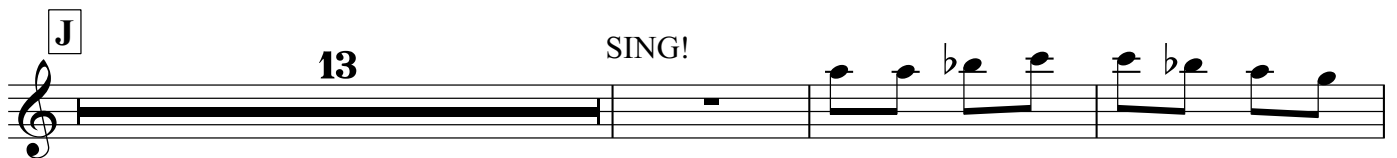
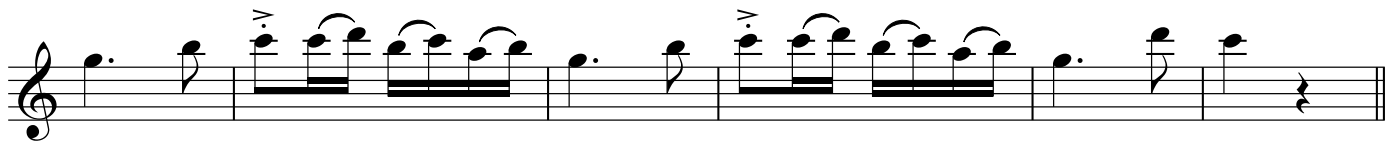
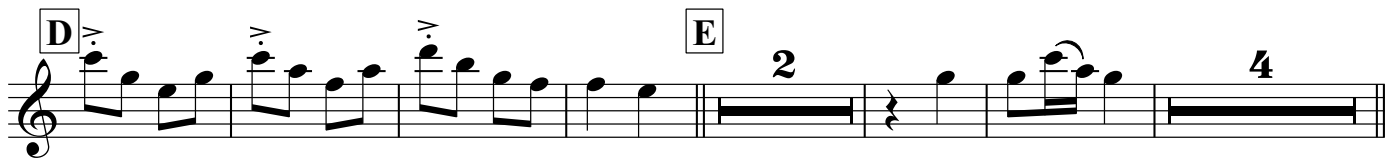
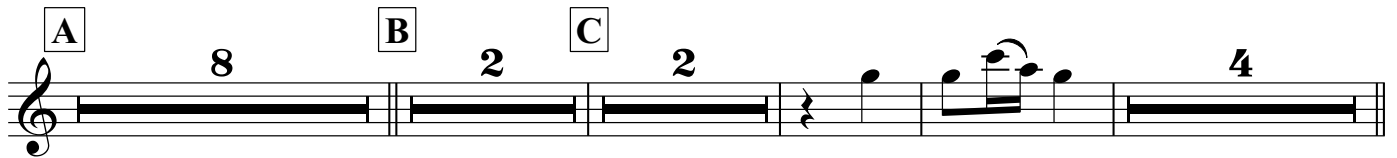
ASAPH

Flute

The Opera, Act I, Scene 4

Andino Stumpetti

Wolfgang Amadeus Stumpartz



la la la la la la la la

Flute

The musical score for the Flute part on page 2 consists of four staves. The first staff begins with a treble clef and a key signature of one flat (B-flat). It contains a sequence of notes with slurs and accents, marked with a box containing the letter 'K'. The second staff continues the melodic line with many notes marked with a 'v' (accents) and includes a box with the letter 'L'. The third staff features a long note with a slur and a 'v' marking, followed by more notes with 'v' markings, and a box with the letter 'M'. The fourth staff shows a series of notes with 'v' markings, followed by three measures with notes marked with a circled 'v' (C-circled-v) and a 'v' marking. The score concludes with a double bar line.